

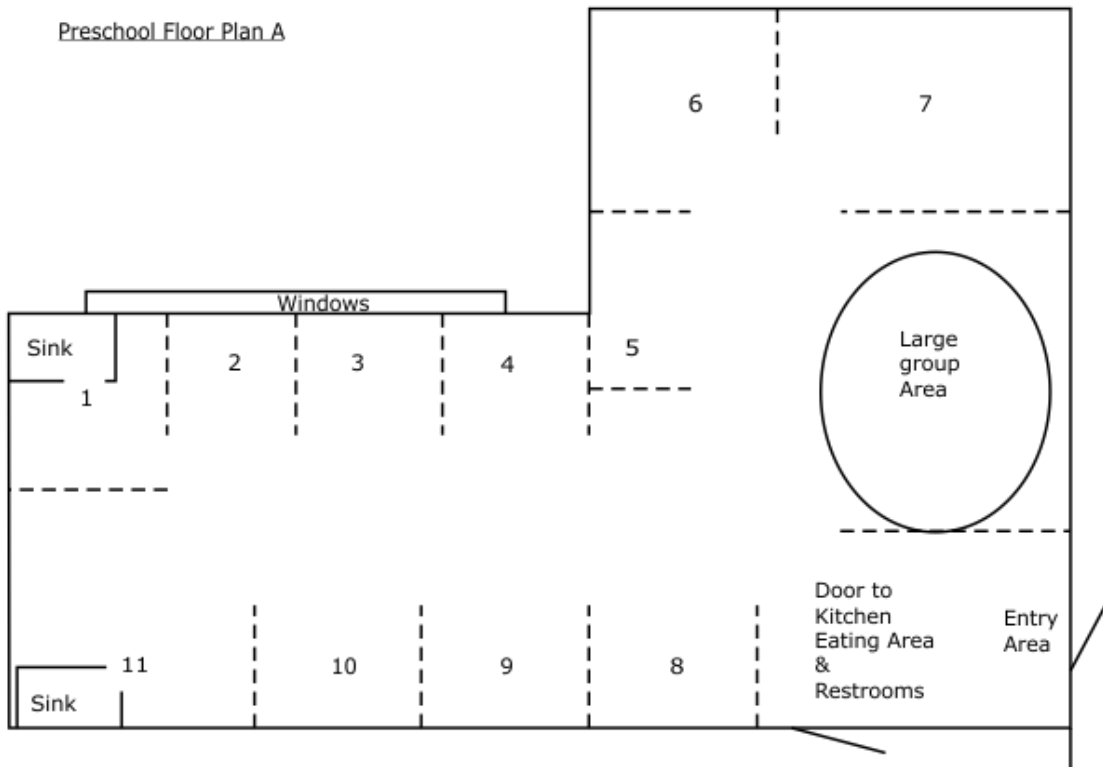
TEST NAME: **FE12 4.0**
TEST ID: **1006980**
GRADE: **09 - Ninth Grade - 12 - Twelfth Grade**
SUBJECT: **Vocational Home Economics**
TEST CATEGORY: **Shared Classroom Assessments**

Student: _____

Class: _____

Date: _____

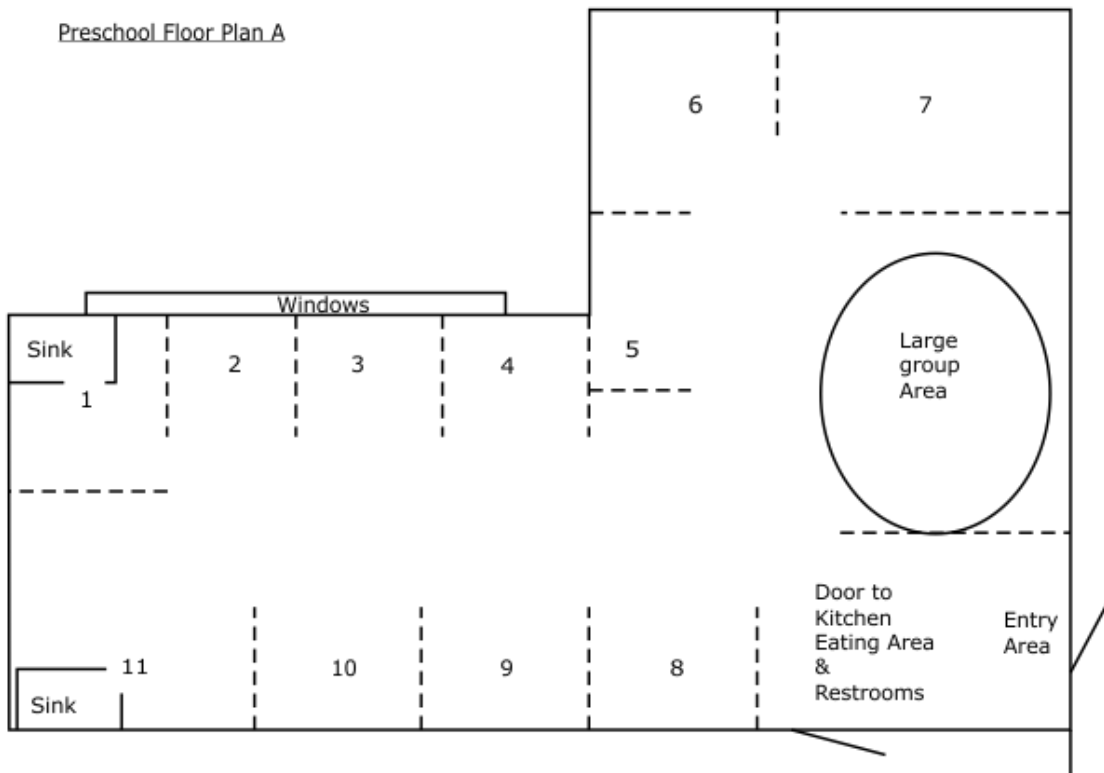
1. Which is an example of family-friendly space in an early childhood environment?
 - A. Child-sized toilets and sinks at the appropriate height for two-year-olds
 - B. Circular rug for children to have "circle time" each morning
 - C. Posted artwork where parents enter to pick up their children
 - D. A locked cabinet to store personal items
2. If space 5 in Preschool Floor Plan A were the computer center and space 6, the writing center; which would be the **best** center to put in space 7?



- A. Art
- B. Dramatic play
- C. Reading
- D. Sensory

3. Which is an example of selecting toys, materials, and equipment with maintenance in mind?
 - A. Avoid spectator toys.
 - B. Consider the cost of keeping the item in good working order.
 - C. Purchase a few well-made items that will last instead of a large quantity of cheaply made items that may break quickly.
 - D. Purchase enough of each item so children can use them cooperatively.

4. There is a loft above space 6 in Preschool Floor Plan A, an exhaust fan in space 1, and a braided rug in Space 9. What is the **best** placement for the art center and the reading center?



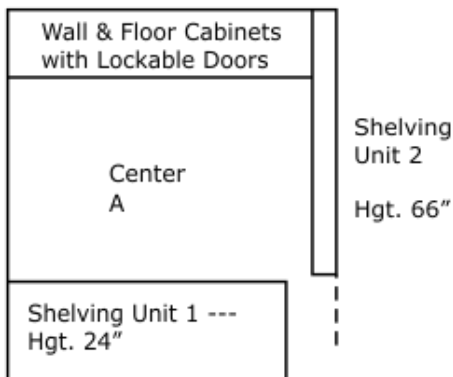
- A. Art in space 1, reading in 6
- B. Art in space 1, reading in 9
- C. Reading in space 1, art in 6
- D. Reading in space 1, art in 9

5. Which is an example of selecting playground equipment with safety in mind?
 - A. Avoid covered bolts and screws.
 - B. Avoid exposed pinch-crush parts.
 - C. Look for hard swing seats.
 - D. Look for open-ended S-rings on swing sets.

6. Which is an example of selecting toys, materials, and equipment with nonsexism in mind?
 - A. Avoid purchasing monster dolls, toy guns, and other weapons.
 - B. Be sure learning materials work well for the age group of children.
 - C. Purchase male as well as female dolls.
 - D. Purchase dolls representing a variety of ethnicities.

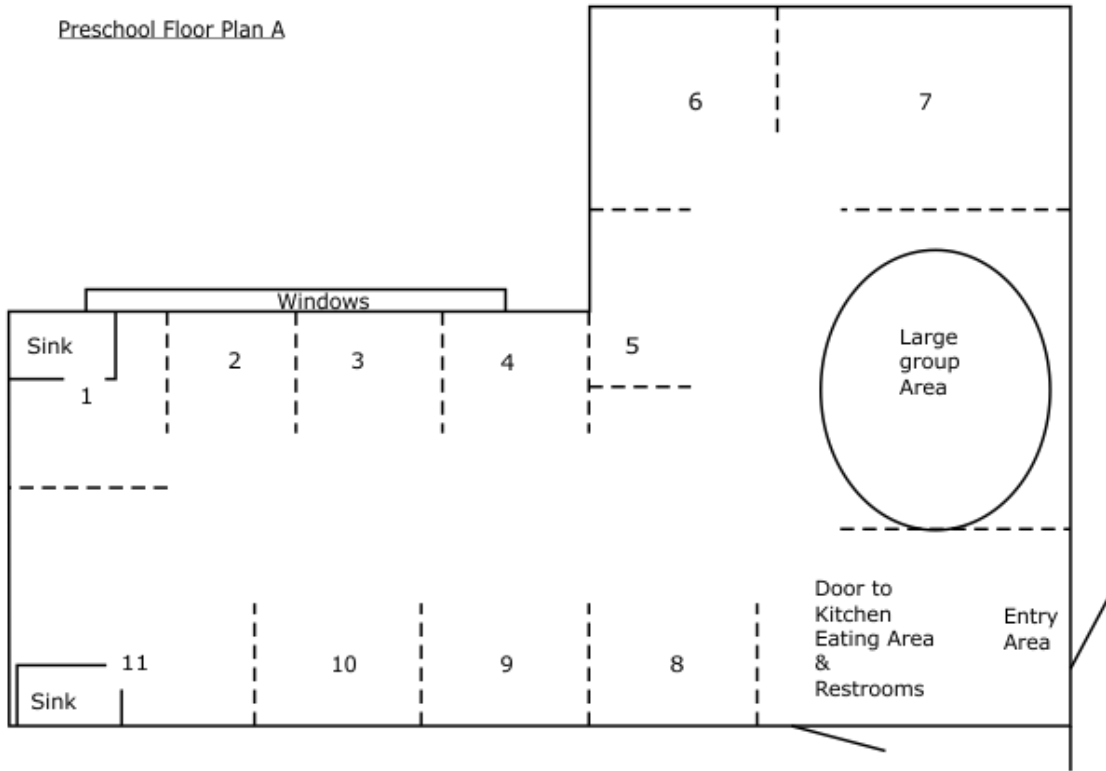
7. If Center A were used as a small manipulative center, which items would be stored there?

Floor Plan A of Center A



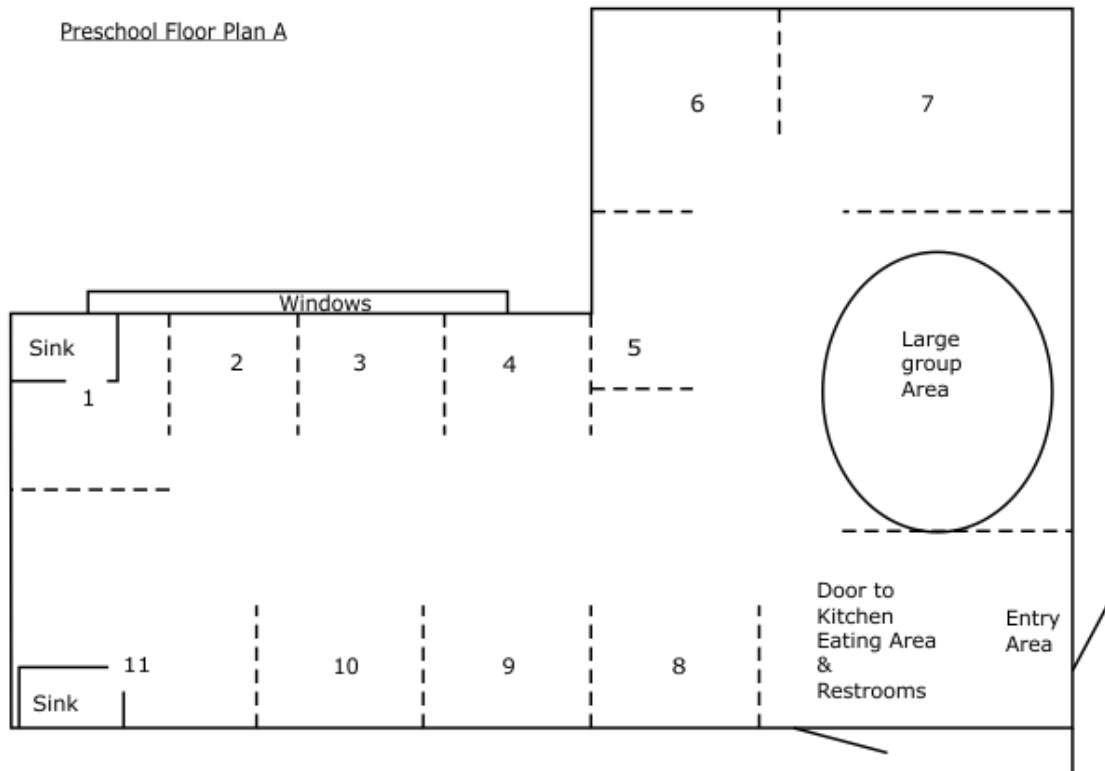
- A. Child-size stove, refrigerator, sink, and doll bed
- B. Sand, rustproof shovels, pails, and cups
- C. Shelving, prisms, and seashells
- D. Stringing beads, lotto boards, and sewing cards

8. In Preschool Floor Plan A, there is a pegboard mounted on the wall in space 3, carpet in space 4, and electrical outlets in space 5. What is the **best** placement for the woodworking center and the block-building center?



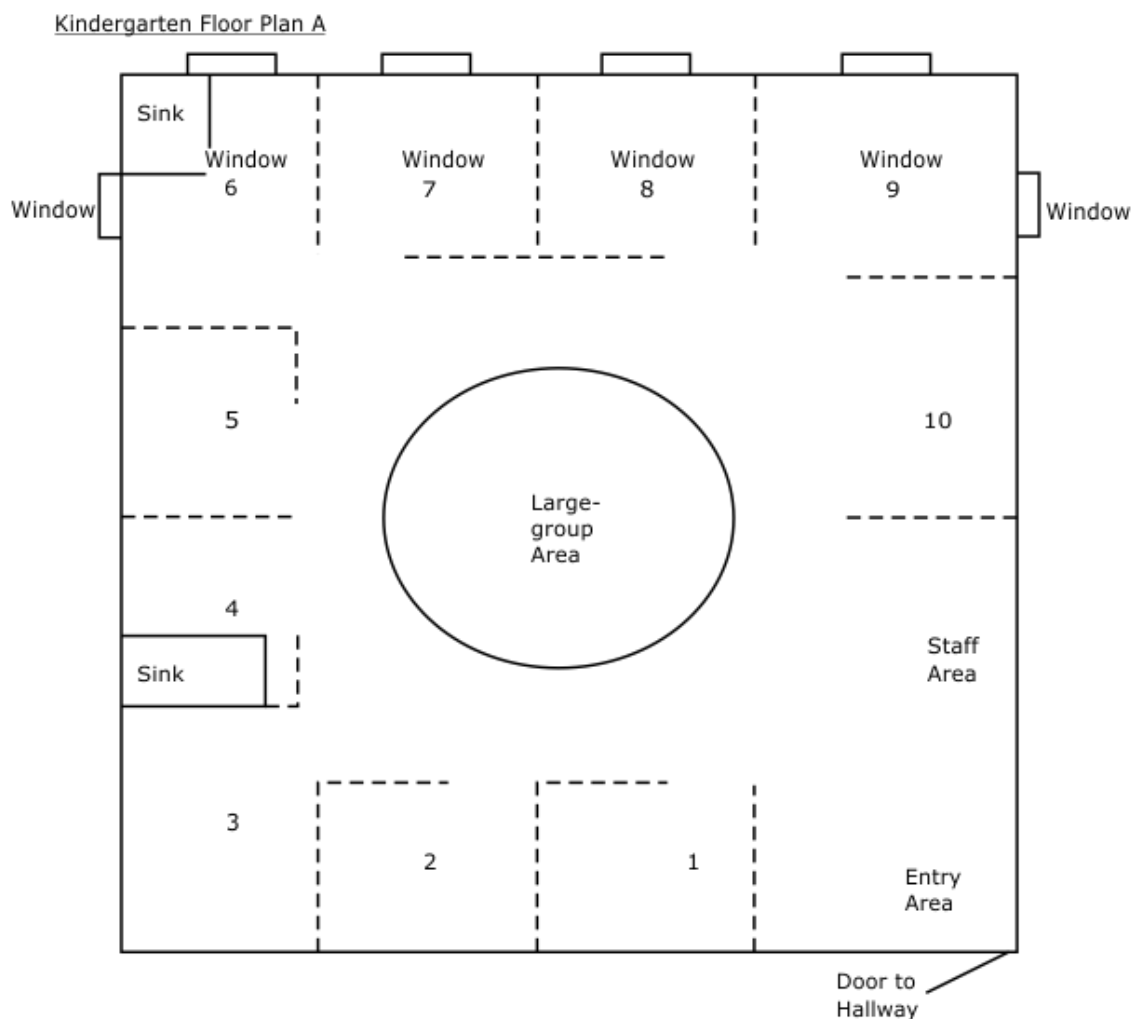
- A. Block-building in space 3, woodworking in 4
- B. Block-building in space 4, woodworking in 3
- C. Block-building in space 4, woodworking in 5
- D. Block-building in space 5, woodworking in 3

9. Ms. Andrews wants to use a low shelving unit in Preschool Floor Plan A as a boundary between two centers in the quiet area of the room. Which two centers might she separate in this way?



- A. Dramatic and music
- B. Block and woodworking
- C. Science and sensory
- D. Small manipulative and writing

10. Space 6 in Kindergarten Floor Plan A has a ventilator fan. Which center would work **best** in space 6?



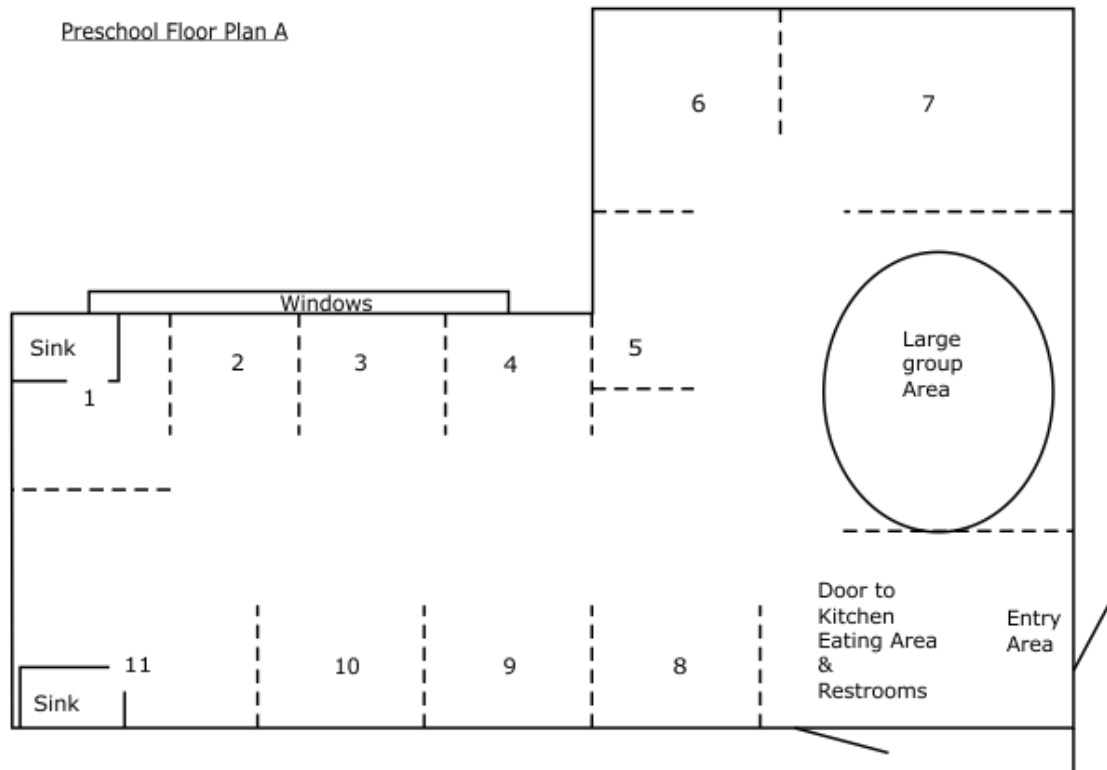
- A. Art
 - B. Block-building
 - C. Computer
 - D. Dramatic play
11. Which is an example of selecting toys, materials, and equipment with multiculturalism in mind?
- A. Avoid purchasing monster dolls, toy guns, and other weapons.
 - B. Be sure learning materials work well for the age group of children.
 - C. Purchase male and female dolls.
 - D. Purchase dolls that represent a variety of ethnicities.

12. Which is an example of selecting toys, materials, and equipment with versatility in mind?
- A. Be sure there is enough room to store the item when it is not being used.
 - B. Be sure to purchase the basics first, then add items as funds permit.
 - C. Be sure to select items that are open-ended.
 - D. Be sure one has enough staff to watch children properly when they use the item.
13. Which is an example of using color to create classroom atmosphere?
- A. Adjusting the dimmer during nap time so children can sleep
 - B. Installing a loft so children will have an out-of-the-way place to read
 - C. Purchasing a circular braided rug to make "circle time" more inviting
 - D. Selecting calm, subdued tones for the walls in the nap room
14. Which is an example of using sound to create classroom atmosphere?
- A. Hanging a patchwork quilt to make the reading area more inviting
 - B. Installing acoustic-absorbent carpeting to make concentrating easier for children.
 - C. Opening the window shades on a sunny day to warm the room
 - D. Painting the walls and ceiling to make the area more restful
15. Which is an example of selecting toys and learning materials with safety in mind?
- A. Avoid battery-operated toys with locking mechanisms.
 - B. Avoid pull toys with short cords.
 - C. Avoid toys with breakable pieces.
 - D. Avoid toys with large parts.

16. Which is an example of equipment for an early childhood environment?

- A. Construction paper and glue to do an art activity
- B. New books on multicultural appreciation
- C. New computers for the childcare center
- D. New tables and chairs for the art center

17. For which centers in Preschool Floor Plan A would spaces 6 and 7 be **most** appropriate?

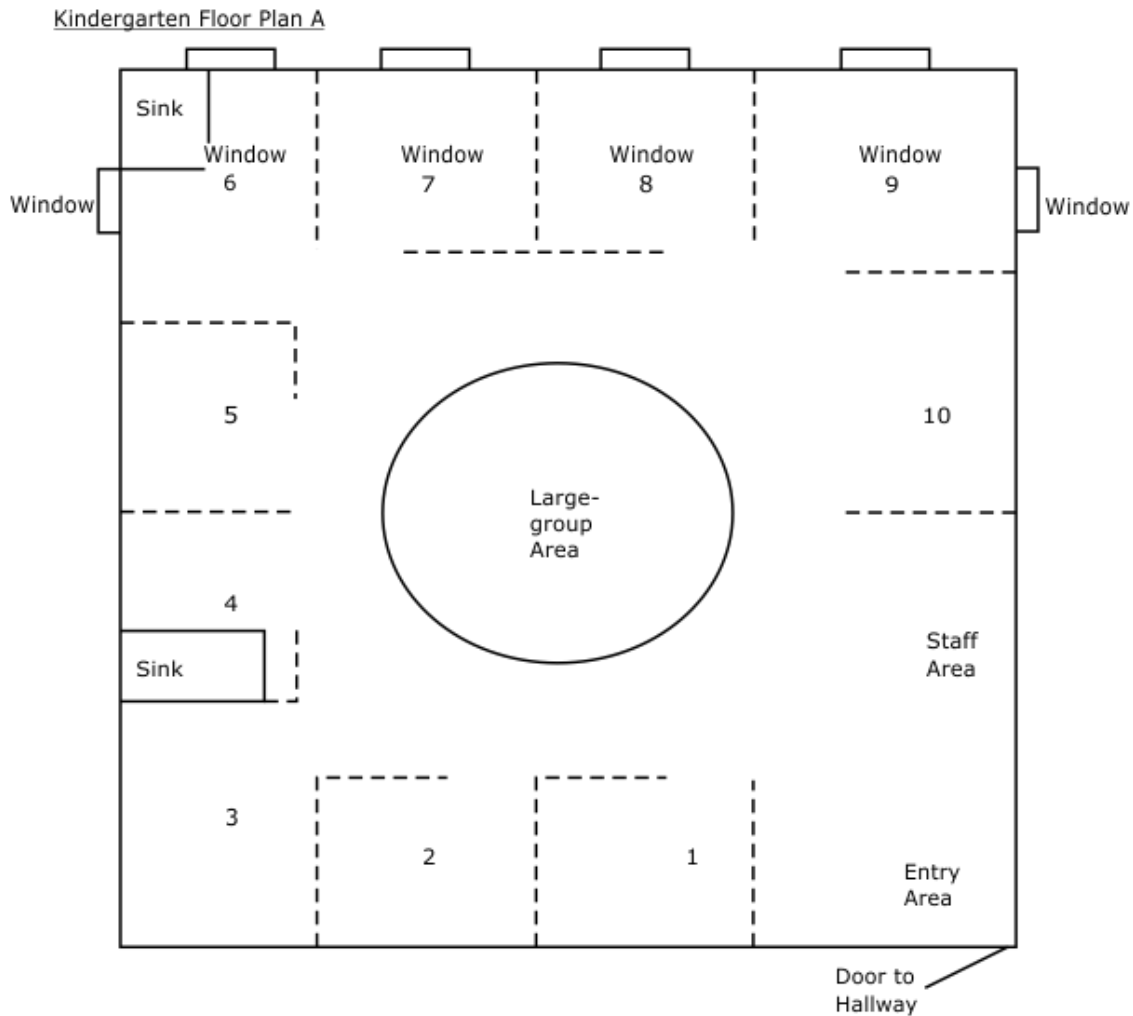


- A. Art, sensory, or science
- B. Computer, woodworking, or music
- C. Reading, writing, or computer
- D. Drama, music, or small manipulative

18. Which is an example of selecting toys, materials, and equipment with space in mind?
- A. Be sure there is enough room to store the item when it is not being used.
 - B. Be sure to purchase the basics first, then add items as funds permit.
 - C. Be sure to select items that are open-ended.
 - D. Be sure one has enough staff to watch children properly when they use the item.
19. If Center B were used as a writing center, which items would be **best** stored there?
- A. Alphabet letters, magazines, picture books, and games
 - B. Cages, magnifying glasses, magnets, and leaf shapes
 - C. Easy-to-clean tables, easels, and drying racks
 - D. Markers, pens, cookie sheets with magnetic letters, and stencils
20. Which is an example of materials for an early childhood environment?
- A. A board game for learning about colors and textures
 - B. A new microwave oven for the staff kitchen
 - C. Bookcases for the parent resource library
 - D. Ingredients for a cooking activity
21. Center B has only two natural boundary walls. If Center B were used for a reading center, what would be the **best** way to define the other two boundaries?
- A. Use an activity table and chairs.
 - B. Use a piano.
 - C. Use cinder blocks to build two additional walls.
 - D. Use low shelving units.

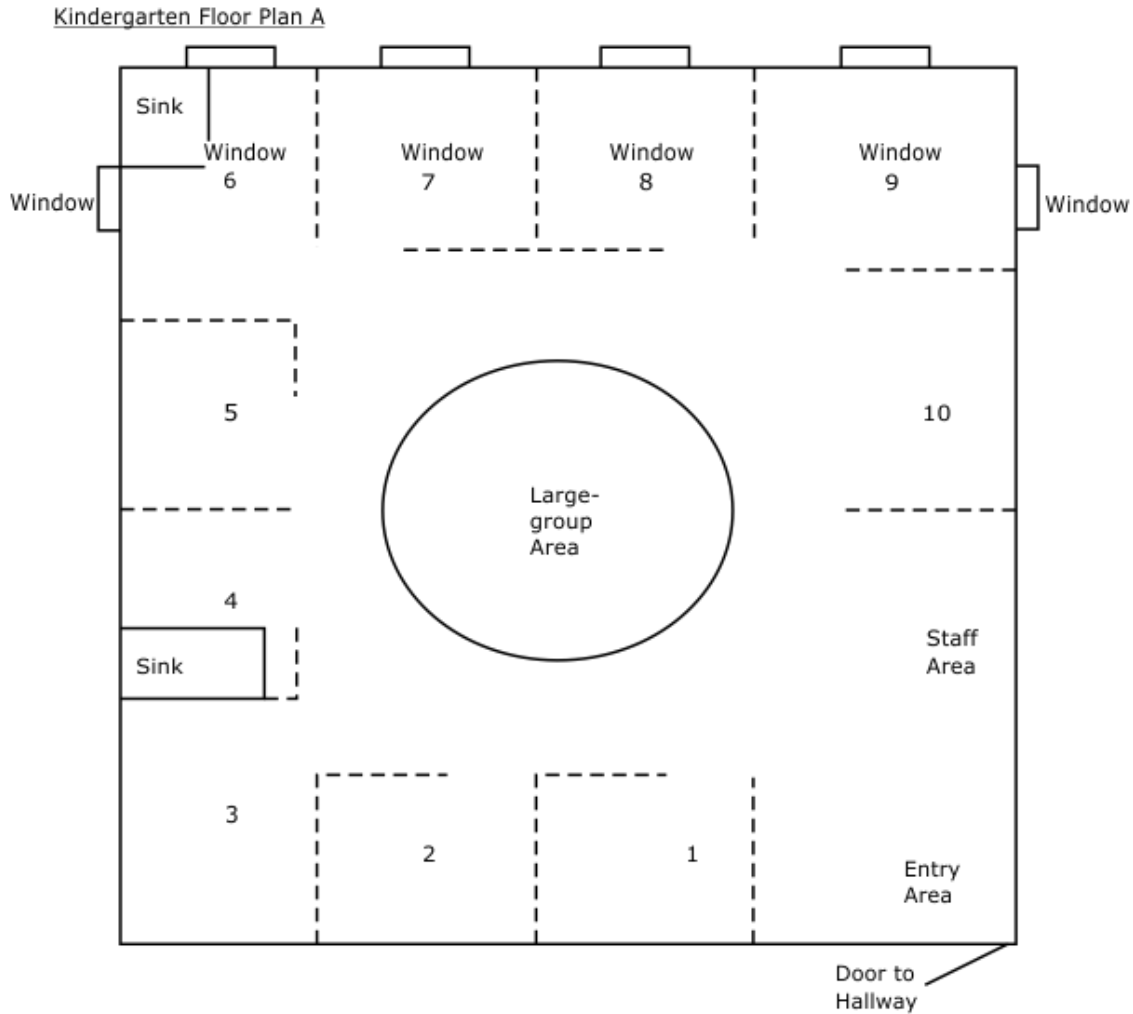
22. Which is an example of space between play equipment for ease of movement?
- A. The crew set up the park swings under a big oak tree.
 - B. The crew set up the play yard so children would not have to walk through the jungle-gym area to get to the swings.
 - C. The installation crew placed one large piece of playground equipment in each corner of the play yard.
 - D. The playhouse was set up near the outer wall of the yard with the door facing in toward the play area.

23. Which pair of centers in Kindergarten Floor Plan A would work **best** side by side?



- A. Art and woodworking
- B. Computer and block-building
- C. Music and sensory
- D. Science and reading

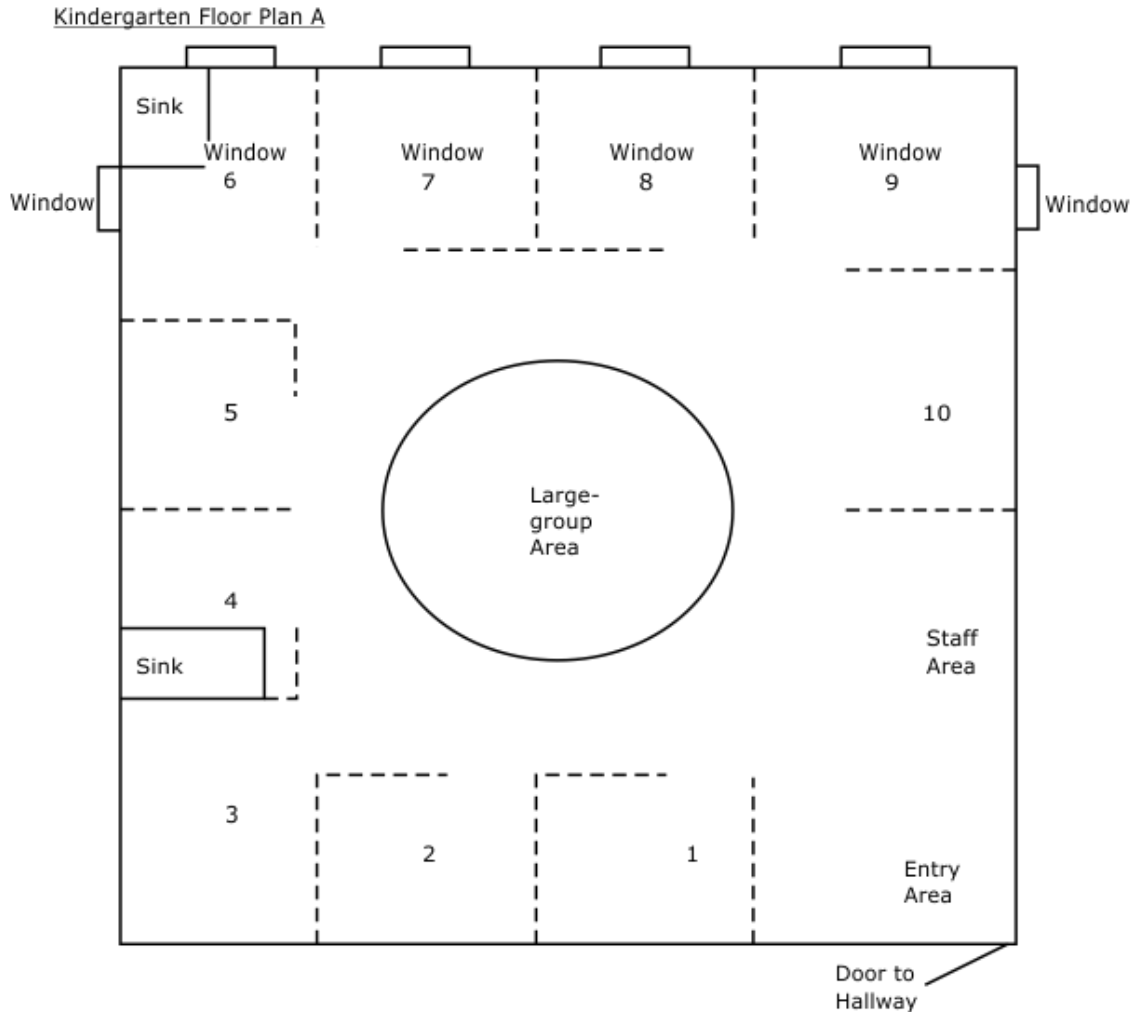
24. If space 10 in Kindergarten Floor Plan A were the computer center and space 8, the writing center; which would be the **best** center to put in space 9?



- A. Art
 - B. Dramatic play
 - C. Reading
 - D. Sensory
25. Which is an example of using pattern and texture to create classroom atmosphere?
- A. Adjusting the dimmer during nap time so children can sleep
 - B. Installing a loft so children will have an out-of-the-way place to read
 - C. Purchasing a circular braided rug to make "circle time" more inviting
 - D. Selecting calm, subdued tones for the walls in the nap room

26. Which is an example of materials for an early childhood environment?
- A. Construction paper and glue to do an art activity
 - B. New books on multicultural appreciation
 - C. New computers for the childcare center
 - D. New tables and chairs for the art center
27. Which is an example of early childhood environments that support the developmental goal of prosocial behaviors?
- A. Providing materials that involve children in cooperative play
 - B. Providing puppets representing different ethnic backgrounds
 - C. Separating noisy from quiet areas to help children remain focused
 - D. Storing materials in centers at a height that children can reach
28. Which is an example of indoor space meeting the learning and developmental needs of children?
- A. A locked cabinet to store personal items
 - B. Child-sized toilets and sinks at an accessible height level for two-year-olds
 - C. A circular rug for children to have "circle time" each morning
 - D. Posted artwork where parents enter to pick up their children
29. Which is an example of using color to create classroom atmosphere?
- A. Hanging a patchwork quilt to make the reading area more inviting
 - B. Installing acoustic-absorbent carpeting to make concentrating easier for children
 - C. Opening the window shades on a sunny day to warm the room
 - D. Painting the walls and ceiling to make the area more restful

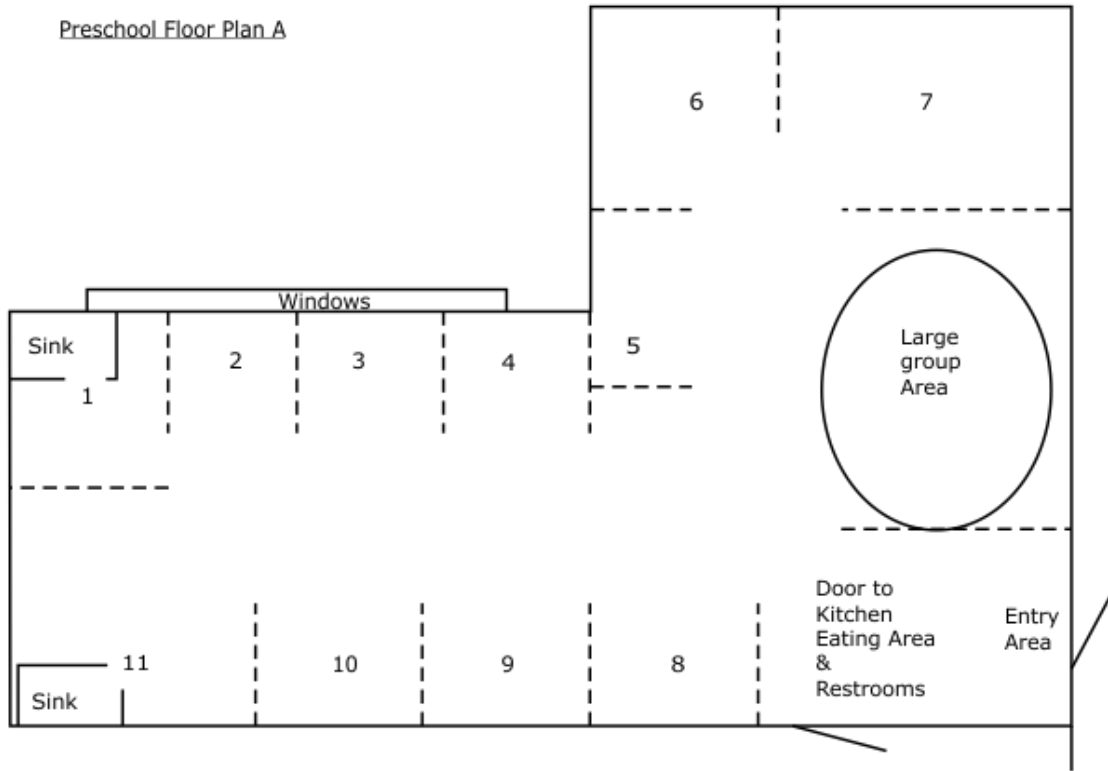
30. Mr. Jones wants to place the computer monitors in space 10 of Kindergarten Floor Plan A to provide visibility from the staff area. Which placement of the monitors would work **best** ?



- A. Monitors facing door to hallway
- B. Monitors facing exterior wall of cube
- C. Monitors facing large-group area
- D. Monitors facing windows at back of room
31. Which is an example of using light to create classroom atmosphere?
- A. Adjusting the dimmer during nap time so children could sleep
- B. Installing a loft so children would have an out-of-the-way place to read
- C. Purchasing a circular braided rug to make "circle time" more inviting
- D. Selecting calm, subdued tones for the walls in the nap room

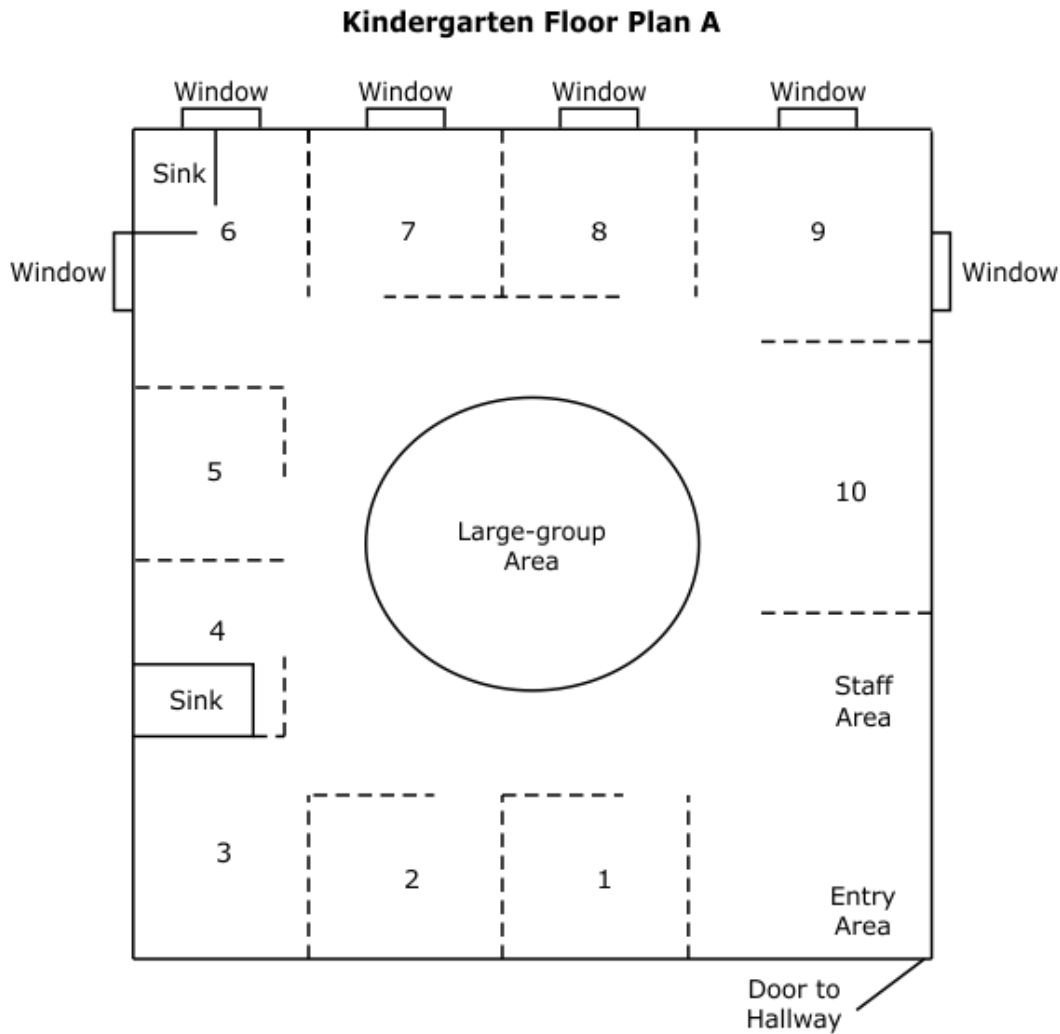
32. Which is an example of early childhood environments that support the developmental goal of self-concept?
- A. Having a place to display children's art work
 - B. Providing a variety of open-ended learning materials
 - C. Providing puzzles appropriate for the different age groups in the center
 - D. Purchasing developmentally appropriate play equipment for each age group
33. Which is an example of early childhood environments that support the developmental goal of self-control?
- A. Providing materials that support cooperative play
 - B. Providing puppets representing different ethnic backgrounds
 - C. Separating noisy from quiet areas to help children remain focused
 - D. Storing materials in centers at a height that children can reach

34. If space 1 in Preschool Floor Plan A were the art center and space 11, a flexible combination of science and sensory; which would be the **best** location for the woodworking center?



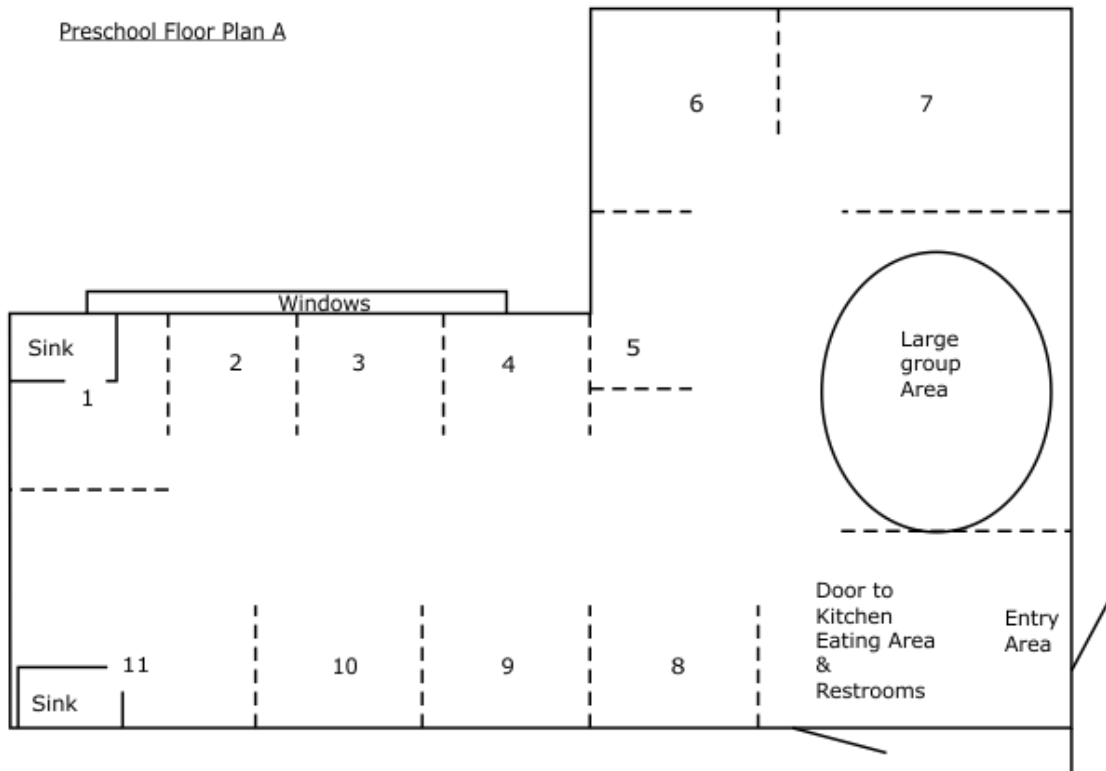
- A. Space 2
- B. Space 3
- C. Space 7
- D. Space 10

35. If the art, sensory, and science centers were placed in spaces 4, 5, and 6 of Kindergarten Floor Plan A, which area would then be the dry area?



- A. The area with spaces 1–3 and 7–10
- B. The area with spaces 1–6
- C. The area with spaces 4–6 and 7–8
- D. The area with spaces 6–10

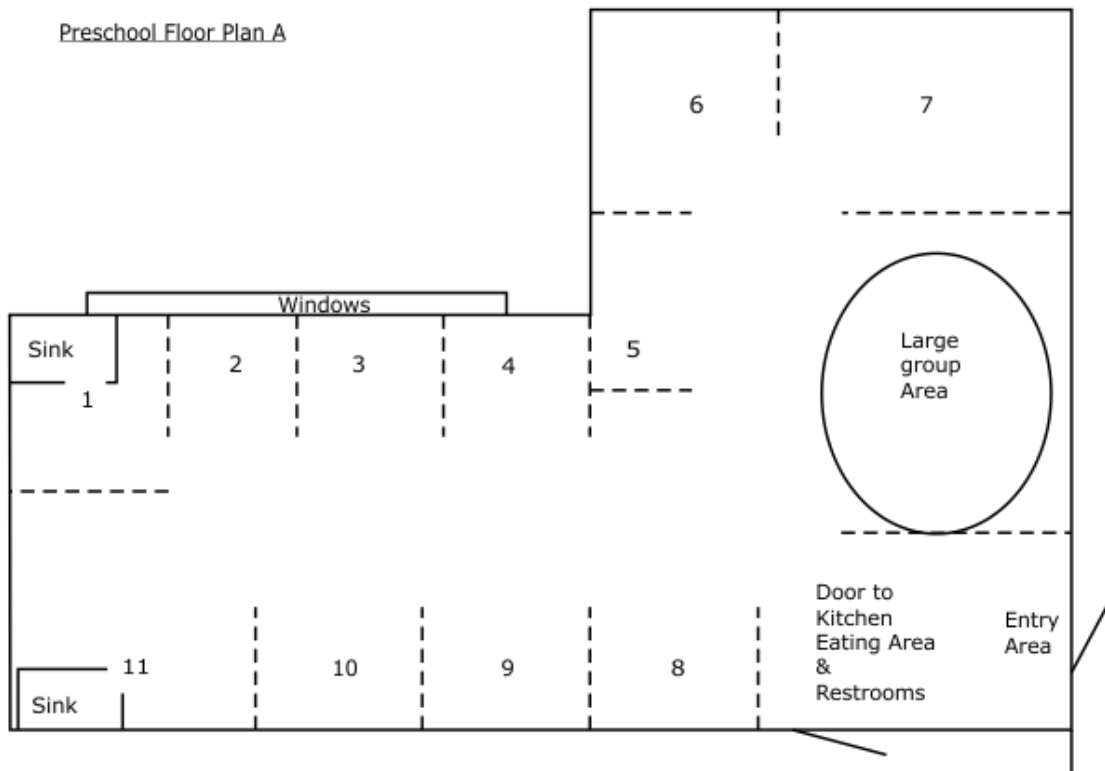
36. There are cages for small pets built into space 11 in Preschool Floor Plan A, rustproof shelving in space 1, and electrical outlets in space 5. What is the **best** placement for the science center and the computer center?



- A. Science in space 1, computer in space 11
- B. Science in space 5, computer in space 1
- C. Science in space 5, computer in 11
- D. Science in space 11, computer in 5
37. Which is an example of visibility on a play yard?
- A. The crew set up the park swings under a big oak tree.
- B. The crew set up the play yard so children would not have to walk through the jungle-gym area to get to the swings.
- C. The installation crew placed a large piece of playground equipment in each corner of the play yard.
- D. The playhouse was placed with the doorway on the side of the main play area where the teachers stood to monitor play activities.

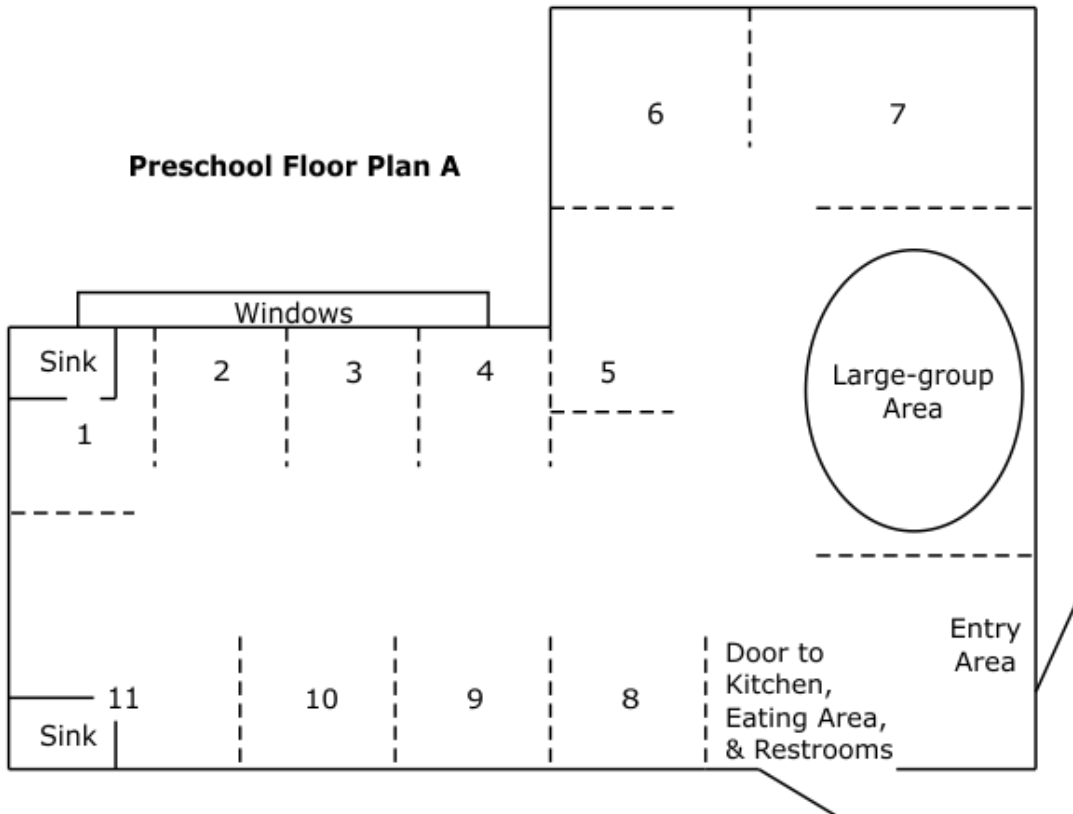
38. Which is an example of furniture for an early childhood environment?
- A. Construction paper and glue to do an art activity
 - B. New books on multicultural appreciation
 - C. New computers for the childcare center
 - D. New tables and chairs for the art center
39. If Center B were used as a reading center, which items would be **best** stored there?
- A. Alphabet letters, magazines, picture books, and games
 - B. Cages, magnifying glasses, magnets, and leaf shapes
 - C. Easy-to-clean tables, easels, and drying racks
 - D. Markers, pens, cookie sheets with magnetic letters, and stencils
40. Which is an example of selecting toys, materials, and equipment with child involvement in mind?
- A. Avoid spectator toys.
 - B. Consider the cost of keeping the item in good working order.
 - C. Purchase a few well-made items that will last instead of a large quantity of cheaply made items that may break quickly.
 - D. Purchase enough of each item so children can use them cooperatively.
41. Which is an example of meeting a developmental space need of a school-age program?
- A. Installing handwashing sinks near the changing area
 - B. Ordering storage cabinets built to hold cots used for napping
 - C. Rearranging furnishings so a child on crutches can move about safely
 - D. Rearranging to provide a quiet place for children to work on their homework

42. Which is an example of meeting a developmental space need of a preschool program?
- A. Installing handwashing sinks near the changing area
 - B. Ordering storage cabinets built to hold cots used for napping
 - C. Rearranging furnishings so a child on crutches can move about safely
 - D. Rearranging to provide a quiet place for children to work on their homework
43. Which spaces in Preschool Floor Plan A have two natural boundaries?



- A. Spaces 4, 5, 6, and 7
- B. Spaces 1, 6, 7, and 11
- C. Spaces 6, 9, 10, and 11
- D. Spaces 5, 6, 7, and 8

44. Which is an example of selecting toys, materials, and equipment with developmental appropriateness in mind?
- A. Avoid purchasing monster dolls, toy guns, and other weapons.
 - B. Be sure learning materials work well for the age group of children.
 - C. Purchase male as well as female dolls.
 - D. Purchase dolls representing a variety of ethnicities.
45. If the science and sensory centers were placed in spaces 1 and 11 in Preschool Floor Plan A, and the reading and writing centers in spaces 6 and 7, which area would then be the active area?

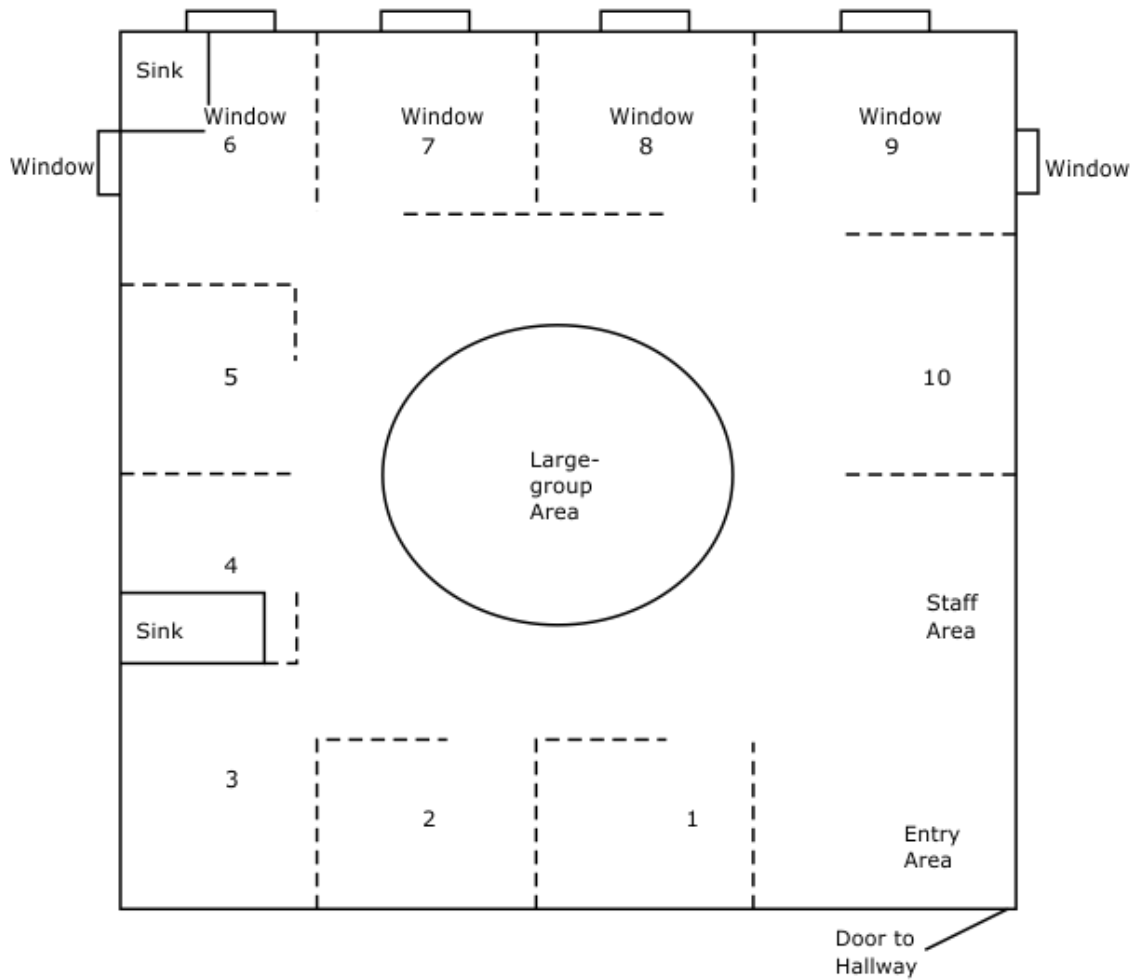


- A. The area with spaces 1 and 11
- B. The area with spaces 6 and 7
- C. The area with spaces 1 and 6
- D. The area with spaces 7 and 11

46. Which is an example of meeting a developmental space need of a program for children with special needs?
- A. Installing handwashing sinks near the changing area
 - B. Ordering storage cabinets built to hold cots used for napping
 - C. Rearranging furnishings so a child on crutches can move about safely
 - D. Rearranging to provide a quiet place for children to work on their homework
47. Which is an example of play space accessibility?
- A. The installation crew set up the park swings under a big oak tree.
 - B. The installation crew set up the play yard so children would not have to walk through the jungle gym area to get to the swings.
 - C. The installation crew placed each of the large pieces of playground equipment in one of the corners of the play yard.
 - D. The playhouse was set up near the outer wall of the yard with the door facing in toward the play area.
48. Which is an example of meeting a developmental space need of a preschool program?
- A. Installing a wheelchair ramp at the entry of the center
 - B. Ordering four new changing tables
 - C. Requesting lower tables with child-sized chairs
 - D. Setting up a hobby center in the back of the classroom

49. Space 4 in Kindergarten Floor Plan A has easy-to-clean tables and built-in, rustproof storage crates. Which center would work **best** in space 4?

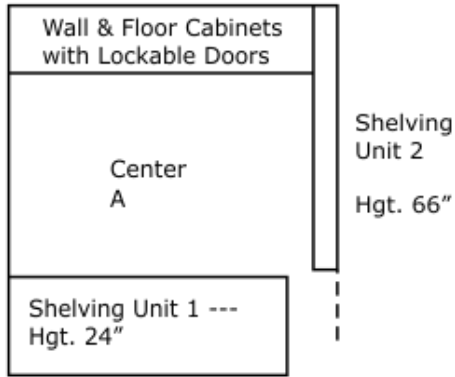
Kindergarten Floor Plan A



- A. Computer
- B. Math
- C. Reading
- D. Sensory

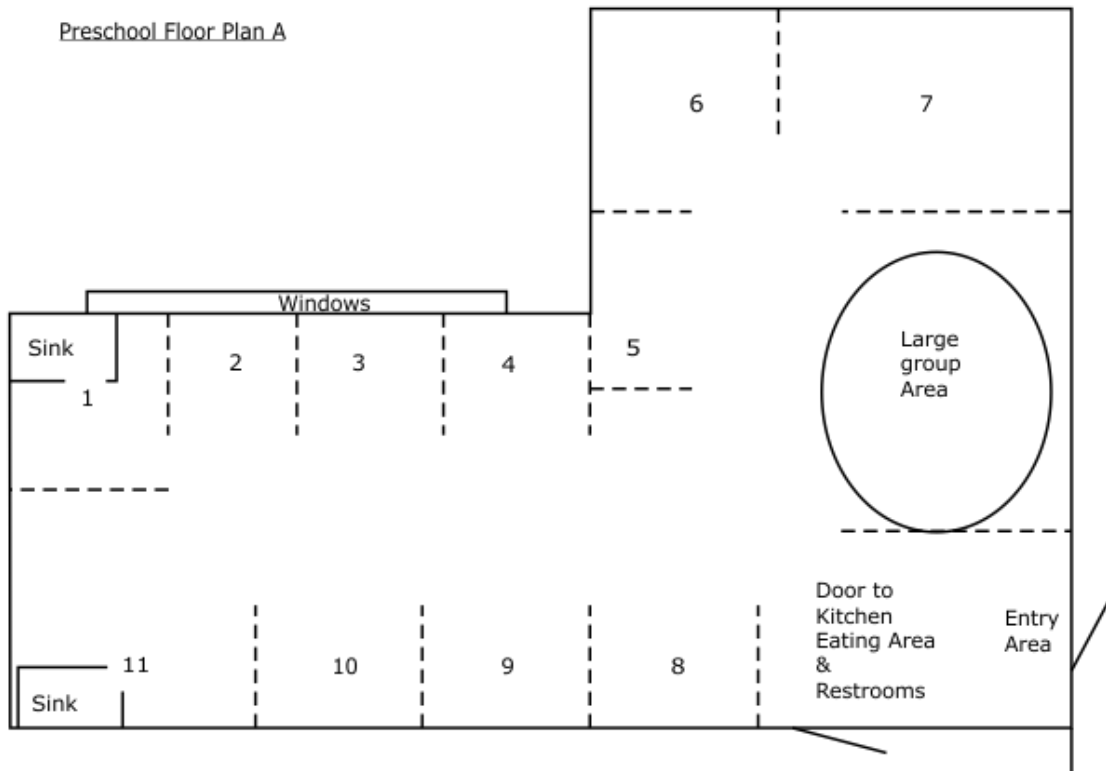
50. Center A has three natural boundary walls. The fourth wall is defined by a low shelving unit. If Center A were used for a block-building center, where is the **best** place to store the heavy wooden blocks?

Floor Plan A of Center A



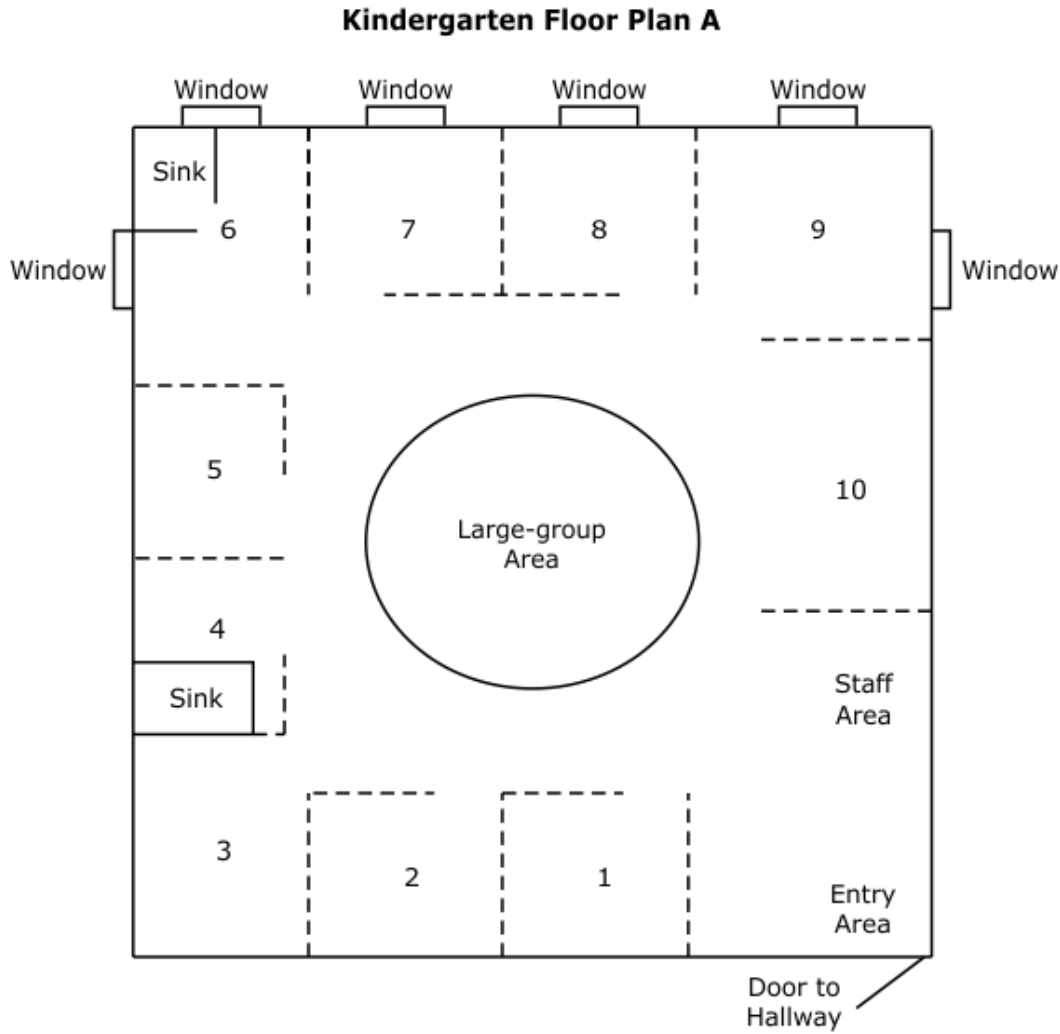
- A. Floor cabinet with lockable doors
 - B. Lower shelf of Shelving Unit 1
 - C. Upper shelf of Shelving Unit 2
 - D. Lower shelf of wall cabinet with lockable doors
51. Which is an example of early childhood environments that support the developmental goal of problem-solving skills?
- A. Having a place to display children’s art work
 - B. Providing a variety of open-ended learning materials
 - C. Providing puzzles appropriate for the different age groups in the center
 - D. Purchasing developmentally appropriate play equipment for each age group

52. Ms. Andrews needs a space in Preschool Floor Plan A with good natural light and water supply for the art center. Which space could **best** be used in this way?



- A. Space 1
- B. Space 2
- C. Space 3
- D. Space 11

53. Mr. Jones needs a space in Kindergarten Floor Plan A with good natural light and away from the water supply for the reading center. Which space could **best** be used in this way?



- A. Space 2
- B. Space 8
- C. Space 9
- D. Space 10

54. Which is an example of selecting toys, materials, and equipment with supervision in mind?
- A. Be sure there is enough room to store the item when it is not being used.
 - B. Be sure to purchase the basics first, then add items as funds permit.
 - C. Be sure to select items that are open-ended.
 - D. Be sure one has enough staff to watch children properly when they use the item.
55. Which is an example of supplies for an early childhood environment?
- A. Construction paper and glue to do an art activity
 - B. New books on multicultural appreciation
 - C. New computers for the childcare center
 - D. New tables and chairs for the art center
56. Which is an example of protection from sun?
- A. The crew built a roof over the sandbox.
 - B. The crew set up the play yard so children would not have to walk through the swing area to get to the climbers.
 - C. The installation crew placed the swings and slide far enough apart so that children on the swings could not reach out and touch those coming down the slide.
 - D. The staff arranged the new playground equipment so teachers could tell what was happening from anywhere in the yard.
57. Which is an example of early childhood environments that support the developmental goal of large-muscle development?
- A. Having a place to display children's art work
 - B. Providing a variety of open-ended learning materials
 - C. Providing puzzles appropriate for the different age groups in the center
 - D. Purchasing developmentally appropriate play equipment for each age group

58. Which is an example of selecting toys, materials, and equipment with quantity in mind?
- A. Avoid spectator toys.
 - B. Consider the cost of keeping the item in good working order.
 - C. Purchase a few well-made items that will last instead of a large quantity of cheaply made items that may break quickly.
 - D. Purchase enough of each item so children can use them cooperatively.
59. Which is an example of meeting a developmental space need of an infant-and-toddler program?
- A. Installing handwashing sinks near the changing area
 - B. Ordering storage cabinets built to hold cots used for napping
 - C. Rearranging furnishings so a child on crutches can move about safely
 - D. Rearranging to provide a quiet place for children to work on their homework
60. Which is an example of using sound to create classroom atmosphere?
- A. Adjusting the dimmer during nap time so children can sleep
 - B. Installing a loft so children will have an out-of-the-way place to read
 - C. Purchasing a circular braided rug to make "circle time" more inviting
 - D. Selecting calm, subdued tones for the walls in the nap room
61. Which is an example of meeting a developmental space need of a school-age program?
- A. Installing a wheelchair ramp at the entry of the center
 - B. Ordering four new changing tables
 - C. Requesting lower tables with child-sized chairs
 - D. Setting up a hobby center in the back of the classroom

62. Which is an example of furniture for an early childhood environment?

- A. A board game for learning about colors and textures
- B. A new microwave oven for the staff kitchen
- C. Bookcases for the parent resource library
- D. Ingredients for a cooking activity